



# Trade & Customs Services

International Trade, Customs and Excise Services

February 2024

## Background

International trade is a pivotal element of any economy, serving as a cornerstone in regulating the flow of goods and services across national borders. At a global level, the complexities of international trade, customs, and excise have gained heightened importance, commanding attention from taxpayers, policymakers, and revenue authorities alike.

While it offers avenues for strategic tax planning, it concurrently exposes taxpayers to substantial risks in jurisdictions where comprehending legal requirements, adhering to diverse regulations, and accommodating evolving prerequisites are paramount.

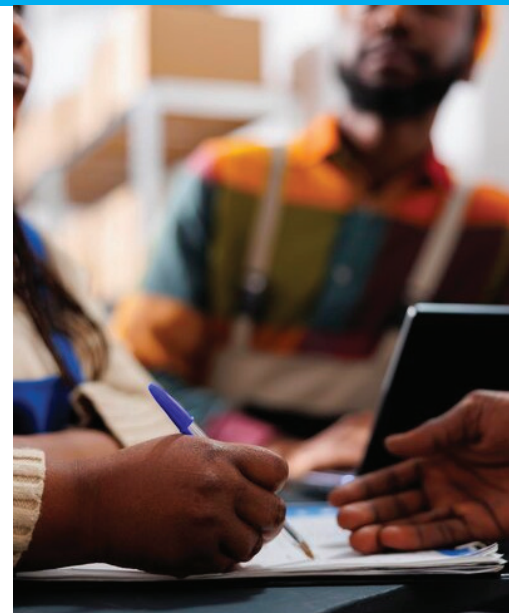
Hence, a nuanced understanding of the tax-related risks coupled with the implementation of effective mitigation measures is imperative. This is particularly crucial given that alterations in tariff structures, trade agreements, and policies can potentially influence trade patterns and broader economic dynamics.

## International Trade, Customs and Excise Regulation in Ghana

The Ghana Revenue Authority (GRA), an authority established under the Ghana Revenue Authority Act, 2009 (Act 791) by the Parliament of the Republic of Ghana, is responsible for the collection of taxes, fees and levies including customs and excise duties on goods.

The Customs Division of the Ghana

Revenue Authority is responsible for handling the international trade, customs and excise activities in Ghana. Additionally, the Customs Division of the GRA is responsible for preventing smuggling and carrying out non-revenue functions such as enforcing laws concerning import and export restrictions and prohibitions.



# Our International Trade, Customs and Excise Service Value Proposition

As a member of the KPMG Global Trade and Customs Services Network, we have a global outreach of experience and a network of over 800 professionals in 80 countries. This diverse team stands ready to guide taxpayers in uncovering cost-saving opportunities across the globe while effectively managing compliance risks associated with complex supply chains and global trade operations.

This provides us with access to resource-based solutions worldwide, including sourcing for the requisite technical support from across KPMG and regular training on excise, customs, and trade trends via webcast or attending conferences. This, coupled with direct access to international trade industry specialists worldwide, ensures that our strategies remain at the forefront of industry advancements.

We perform multi-country trade, customs, and excise assignments as one team. Operating as a cohesive team, our diverse pool of multi-skilled technical specialists enables us to develop and deliver practical, holistic business solutions tailored to meet specific needs and objectives.

We take pride in consistently delivering value to our clients, ensuring that our solutions are not only fit for purpose but also highly relevant in the ever-evolving landscape of global trade, customs, and excise services.



## What we offer

We collaborate closely with our clients to enhance the value and efficiency of their business, offering a comprehensive range of services, including:

- **Efficient Cross-Border Operations:** We specialize in establishing and maintaining streamlined cross-border

operations, strategically managing costs to uphold a competitive edge.

- **Government and Authority Interaction:** Our team facilitates seamless interaction with entities such as the Ghana Revenue Authority (GRA) and other relevant authorities and organizations, ensuring a smooth regulatory process.
- **Compliance Assurance:** We are dedicated to guaranteeing compliance with local laws and regulations associated with cross-border trade, providing clients with confidence and reliability in their international operations.
- **Customised Trade Processes:** Tailoring our approach, we customise trade processes and controls to align with the unique needs of each business unit, company, or industry, optimising efficiency and effectiveness.
- **Risk Mitigation:** Recognizing the complexities of cross-border business, we specialize in identifying and mitigating risk issues, offering proactive strategies to safeguard our clients' interests and ensure smooth international business transactions.

# Our Service Offerings

The KPMG Global International Trade, Customs and Excise Team has the experience to assist you with the following:

**Managed Service Demand:** Our managed services extend beyond importers. We help your company deliver strategic value to higher-priority work by outsourcing repetitive tasks such as bonded warehousing licensing assistance, duty refunds and customs concession/VAT relief assistance.

**Classification and Valuation Support:** Our specialised team excels in Customs External Tariff (CET) classification determinations. We offer comprehensive support for value validation, ensuring a thorough valuation process, and assist in corrections when needed.

**Training and Outreach:** We conduct tailor-made training to suit specific client needs or general external trainings on topical customs and excise issues, compliance requirements, update on amendments tailored to the needs of businesses.

**Audit Assistance:** We assist with post-clearance and excise audits conducted by the GRA to ensure taxpayers are able to navigate through the audit process efficiently and effectively, address challenges, and ensure adherence to tax laws, thereby minimizing potential tax consequences associated with non-compliance.

**Health Checks/Due Diligence:** We assist with customs and excise health reviews and due diligence in accordance with the relevant tax laws in Ghana and industry experience.

**Free-Trade Compliance Management:** We assist in free-trade compliance management services, enhancing overall compliance, obtaining necessary certifications, ensuring accurate duty payments, and unlocking potential savings through the implementation and management of free-trade agreements.

**General Compliance and Trade Consulting:** We assist with general customs and excise advice based on the customs and excise laws and regulations in Ghana. Additionally, we assist in ensuring compliance following commercial events, such as transfer pricing adjustments.

This comprehensive suite of services is designed to address diverse needs in the realm of international trade, customs, and excise, offering tailored solutions to optimize efficiency, effectiveness, enhance compliance, and unlock strategic value for businesses.

## Contact Us

Kofi Frempong-Kore  
Partner, Head of Tax and  
Regulatory Services

KPMG  
Marlin House  
13 Yiyiwa Drive Abelenkpe  
P.O. Box GP 242

Tel: +233 (302) 731004 - 6  
kfkore@kpmg.com



# Kofi Frempong-Kore

Partner and Head of Tax  
KPMG Ghana

The information contained herein is of a general nature and is not intended to address the circumstances of any particular individual or entity. Although we endeavor to provide accurate and timely information, there can be no guarantee that such information is accurate as of the date it is received or that it will continue to be accurate in the future. No one should act upon such information without appropriate professional advice after a thorough examination of the particular situation.

© 2024 KPMG a partnership established under Ghanaian law and a member firm of the KPMG global organisation of independent member firms affiliated with KPMG International Limited, a private English company limited by guarantee. All rights reserved.